

DAFWA - \$1.2 M over four years to support

- crucial link between growers, agribusiness and research and technology providers
- exchange of ideas and uptake of new technologies
- skills development of individuals and groups which helps underpin the capacity of the whole sector

Co-location with GIWA and AEGIC

- a vibrant environment to connect across the whole supply chain



Fitzgerald Biosphere Field Day

LOCAL AND RELEVANT



Direct conversations between researchers and growers

- at trial and experimental sites
- field days
- update events

Active partnership and collaboration in specific projects / trials

eg.

- 'Focus Paddock' project
- Spore-trapping as an early crop disease warning system
- Glyphosate resistance monitoring

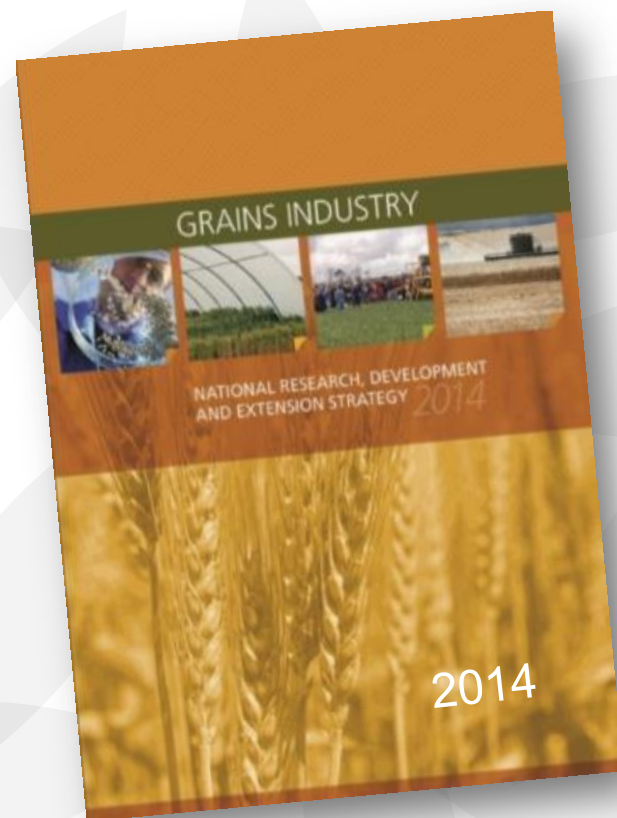




How state agencies, CSIRO, universities, the private sector and GRDC will work together with industry

- National / International **Research**
(Discovery)
- Regional **Development**
(Translation)
- Local **Extension**
(Adoption)

Practise Change to Profit



Supporting your success



Government's growth agenda

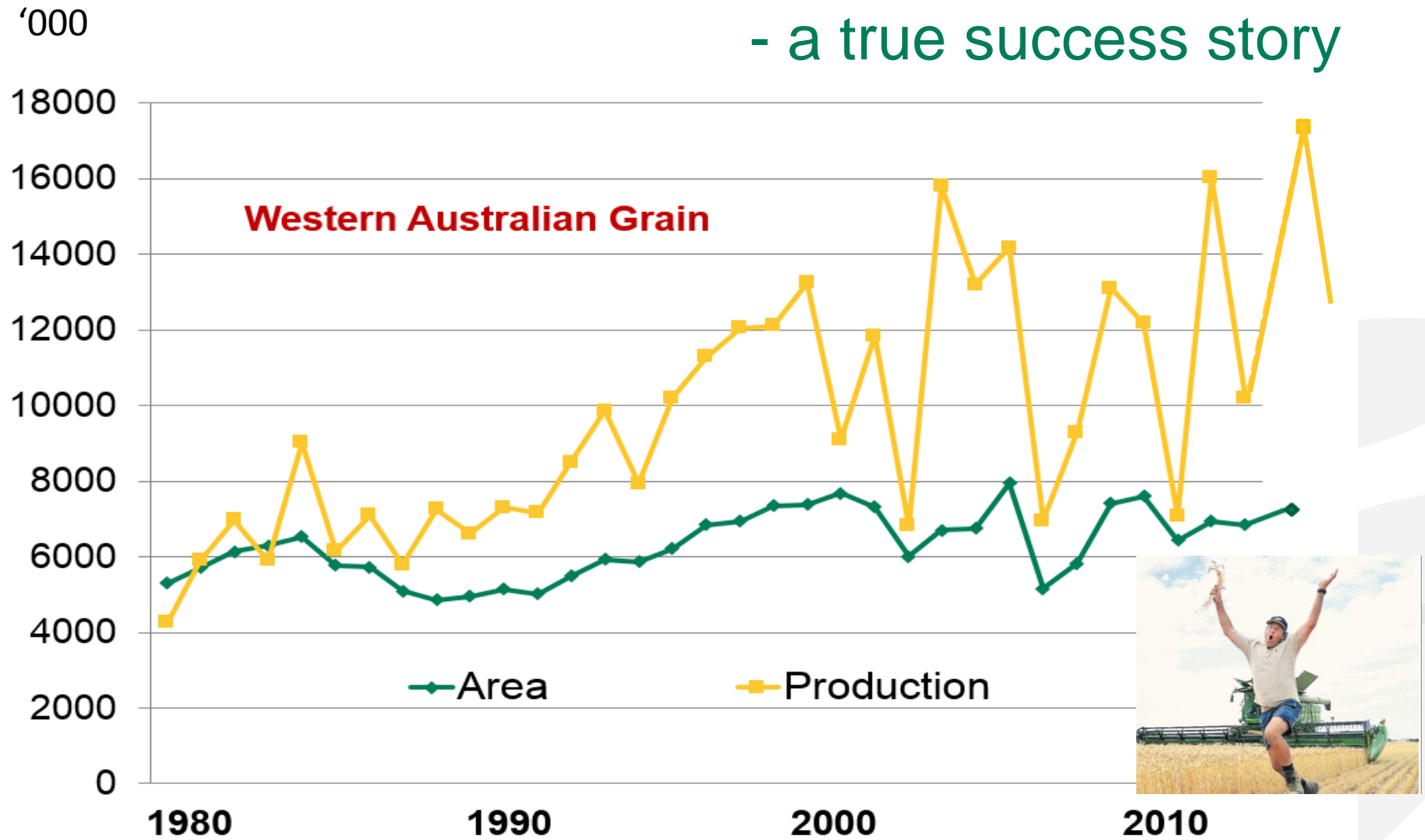


**Double the value
of the sector
by 2025+**

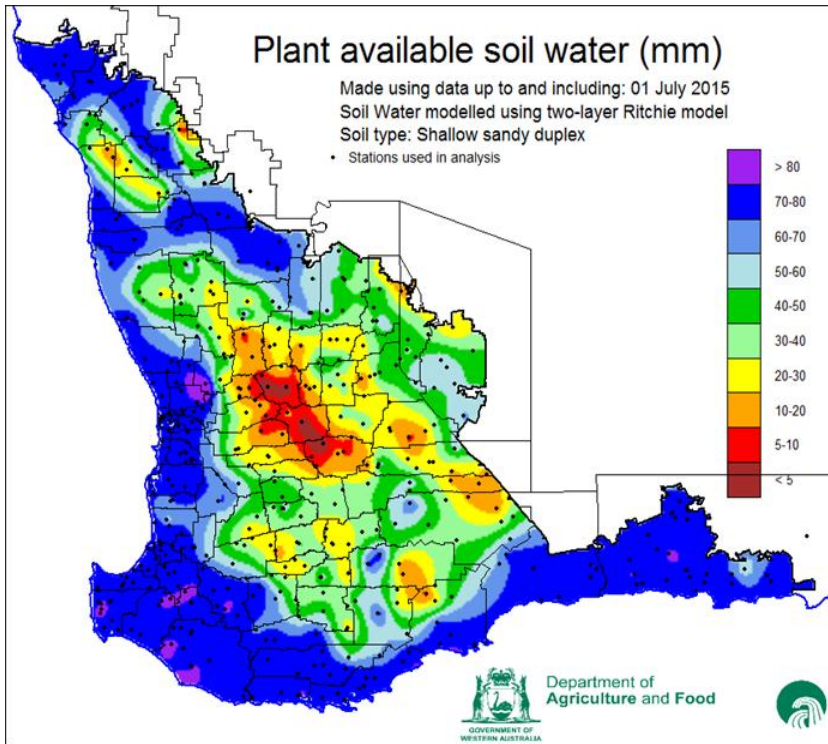
Focus on supporting industries and businesses that are capable and motivated to grow.



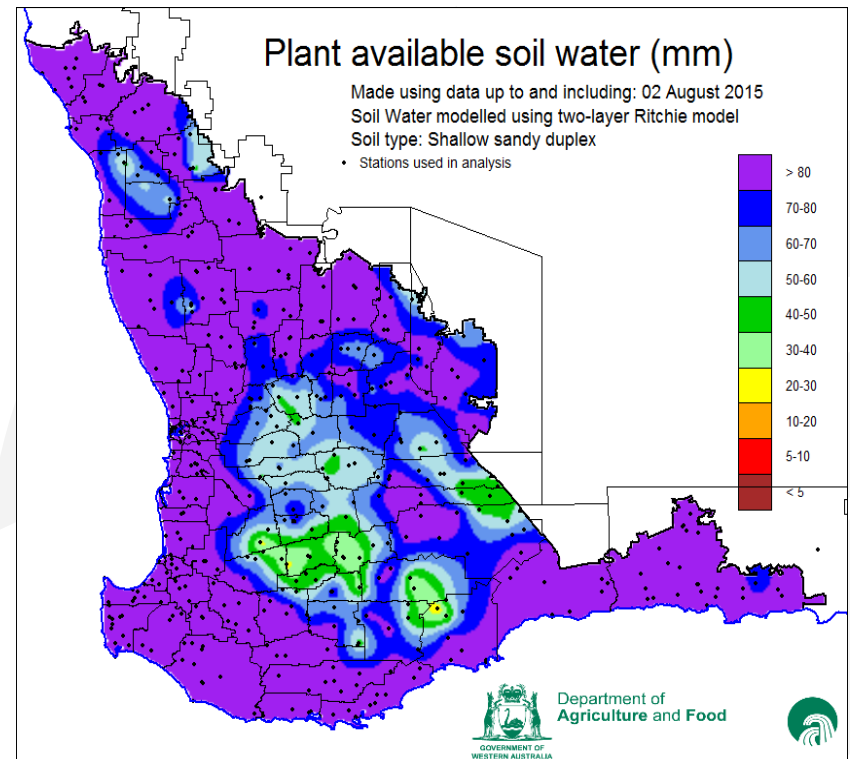
Our biggest and growing sector - a true success story



Against the backdrop of a drying climate



July 1



August 1